



No. 3502 Master Carrier

1 - 1 lb. 6 oz.
Plated steel block equipped with 4 nylon-tired ball-bearing wheels, and cable clamp for tightening cable from outside of channel.
Carrier width: Approximately 4-1/2".



No. 3402 Master Carrier

1 - 10 oz.
Includes plated steel block with 2 nylon-tired ball-bearing wheels and cable clamp for tightening cord from outside of channel. Rubber bumper provides quiet operation.
Carrier width: Approximately 2-1/2".
No. 3525 Cord Connector used to splice cords adjacent to master carrier on hand-operated or motorized tracks.



No. 3439 Tandem Carrier

1 - 6 oz.
Placed on 12" centers behind master carriers. Number dependent on amount of overlap required. Composed of steel block and 2 nylon-tired ball-bearing wheels. Rubber bumper provides quiet operation.
For use only with Model 340 series tracks.



No. 3503 Live End Pulley

1 - 2 lbs. 15 oz.
Painted steel block equipped with 2 oil-impregnated sleeve-bearing nylon wheels. Attaches to track end. Extends 3-1/2" beyond track end.
Pulley width: Approximately 7-1/2".



No. 3504 Dead End Pulley

1 - 2 lbs. 6 oz.
Plated steel block equipped with 1 oil-impregnated sleeve-bearing nylon wheels. Attaches to end of track. Extends 3-1/2" beyond track.
Pulley width: Approximately 4-3/4".



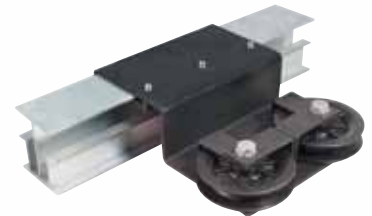
No. 3403 Live End Pulley

1 - 1 lb. 11 oz.
Equipped with 2 oil-impregnated sleeve-bearing nylon wheels. Attaches to track end. Extends 2 - 1/4" beyond track end.
(Used with 340 series tracks only.)



No. 3404 Dead End Pulley

1 - 15 oz.
Painted steel block equipped with 1 oil-impregnated sleeve-bearing nylon wheel and 2 steel idler wheels. Attaches to end of track. Extends 4-1/4" beyond track end.
(Used with 340 series track only.)



No. 3503-A Center Take Off Live End Pulley

1 - 3 lbs.
Designed to be used in installations where it is necessary to have the operating lines routed perpendicular to the track. When using this device, add 1 each Model 3504 Dead End Pulley. 3503-A must be located a minimum of 4' from the end of the track. Additional pulleys may be required to mule operating lines to machine or floor pulley.



No. 3524 Splicing Clamp [Suspended Systems]

1 pr. - 2 lbs. 3 oz.
For joining track sections assuring proper alignment of track channels on suspended installations.
Approximately: 10" long x 2-1/2" wide x 2" high.
NOTE: Used with suspended tracks only.