

**INSTALLATION INSTRUCTIONS FOR HAND OPERATED SILENT STEEL  
ADC HEAVY DUTY CURTAIN TRACK  
MODELS: 280, 281, 282, 280-A, 283-N, 283-R**

---

**I. SUSPENDED INSTALLATIONS**

1. Lay the two track halves on the floor with the track slot facing down and with the amount of center overlap desired for final installation. If splicing is required, it should be done at this time. Splicing instructions can be found below. Attach the two lap clamps to the tracks at the overlap with the hardware provided.
2. Install the live-end and dead-end pulleys to the end of the tracks and secure with the hardware provided.
3. Secure the hanging clamps along the track sections at maximum 7' intervals. Raise the track to its permanent position and secure in place. Mount the floor pulley to the floor directly under and aligned with the track live end pulley.
4. Insert an equal amount of single carriers into each section of track. The carriers can be inserted at the open track ends located at the center overlap. Insert the master carriers into the track sections. Install the eye-bolt end stops to the open track ends at the overlap and secure.
5. Thread the operating cord through one wheel of the live-end pulley, through the holes in the carriers, the cord connectors of the master carrier and the eye-bolt of the end stop. Run the cord around the dead-end pulley and through the single carriers of the other half of track and through one (1) of the cord connectors of the second master carrier. Loosely secure this end of the cable to the master with the cord connector. Thread the remaining end of the operating cable through the floor pulley, up and through the remaining wheel of the live end pulley, through the eye-bolt of the second section of track and to the remaining cord connector of the second master carrier. Loosely secure this end of the cable to the master carrier.
6. Snap one rubber spacer on the inside edge (edge facing the master carrier) of each single carrier, just above the cord hole.
7. Move the master carriers an equal distance from the pulley ends of their track sections. Remove the slack from the cord at the master carrier with the free ends of cord and secure the cord at both masters with the cord connectors provided. Cut off the excess cord.

**IMPORTANT NOTES**

- ② NEVER USE LESS THAN FIVE SUSPENSION POINTS. THE TRACK SHOULD BE SUPPORTED AT ITS ENDS.
- ② ALSO SUPPORT THE LIVE END PULLEY TO THE OVERHEAD STRUCTURE USING THE

HOLE PROVIDED ON THE PULLEY.

- ② SUPPORT MEDIA SHOULD BE CHAIN, STEEL MEMBERS, OR WIRE CABLE. **NEVER USE ROPE.**
- ② ONE-WAY OPERATING CURTAINS REQUIRE ONLY ONE MASTER CARRIER AND DO NOT HAVE AN OVERLAP. THE REST OF THE RIGGING PROCEDURE AND HARDWARE IS THE SAME AS WITH A CENTER OPENING, BI-PART CURTAIN.

## **I. CEILING INSTALLATIONS**

**Because ceiling mounted tracks do not provide the opportunity for vertical adjustment, it is very important that the ceiling structure be level. Any deviation can cause the space between the bottom of the curtain and the floor surface to be uneven. Shims or blocking may be required for this purpose.**

Hanging clamps and lap clamps are not needed or provided for ceiling mounted track systems. The top of the track channel should be drilled every 18" for direct attachment to the ceiling structure. The track channel should be properly secured before inserting any accessories.

1. Install the live-end and dead-end pulleys to the end of the tracks and secure with the hardware provided.
2. Raise the track to its permanent position and secure in place. Be sure to overlap the tracks at the center in order to provide the necessary center overlap for the curtain. If splice clamps are required install them to the track sections as per splicing instructions and notes below. Mount the floor pulley to the floor directly under and aligned with the track live end pulley.
3. Insert an equal amount of single carriers into each section of track. The carriers can be inserted at the open track ends located at the center overlap. Insert the master carriers into the track sections. Install the eye-bolt end stops to the open track ends at the overlap and secure.
4. Thread the operating cord through one wheel of the live-end pulley, through the holes in the carriers, the cord connectors of the master carrier and the eye-bolt of the end stop. Run the cord around the dead-end pulley and through the single carriers of the other half of track and through one (1) of the cord connectors of the second master carrier. Loosely secure this end of the cable to the master with the cord connector. Thread the remaining end of the operating cable through the floor pulley, up and through the remaining wheel of the live end pulley, through the eye-bolt of the second section of track and to the remaining cord connector of the second master carrier. Loosely secure this end of the cable to the master carrier.

5. Snap one rubber spacer on the inside edge (edge facing the master carrier) of each single carrier, just above the cord hole.
6. Move the master carriers an equal distance from the pulley ends of their track sections. Remove the slack from the cord at the master carrier with the free ends of cord and secure the cord at both masters with the cord connectors provided. Cut off the excess cord.

### **IMPORTANT SPLICING INFORMATION**

**CEILING MOUNTED TRACK:** Place splicing clamps on track and align holes in splicing clamps with factory drilled and tapped holes of the track channel. Insert twelve 1/4-20 by 5/16" long stove bolts through holes in sides of splice clamps and tighten securely into tapped holes in track channels. Refer to ADC drawing number P-2824-A2 for additional information.

**SUSPENDED TRACK:** Follow the instructions as given on ADC drawing number A2824A. Adjust the set screws so that the walls and center opening of track channels are in alignment for proper operation.

# **INSTALLATION INSTRUCTIONS FOR MACHINE OPERATED MODELS: 280, 281, 282, 280-A, 283-N, 283-R TRACK SYSTEMS**

---

## **I. SUSPENDED INSTALLATIONS**

1. Lay the two track halves on the floor with the track slot facing down and with the amount of center overlap desired for final installation. If splicing is required, it should be done at this time. Splicing instructions can be found below. Attach the two lap clamps to the tracks at the overlap with the hardware provided.
2. Install the live-end and dead-end pulleys to the end of the tracks and secure with the hardware provided.
3. Secure the hanging clamps along the track sections at maximum 7' intervals. Raise the track to its permanent position and secure in place. Mount the curtain machine to the floor directly under the track live end pulley. Make sure that the drum of the machine is aligned with the live end pulleys and that the cords will be able to attach to the drum without crossing or rubbing.
4. Insert an equal amount of single carriers into each section of track. The carriers can be inserted at the open track ends located at the center overlap. Insert the master carriers into the track sections. Install the eye-bolt end stops to the open track ends at the overlap and secure.
5. Thread one end of the operating cable through one wheel of the live-end pulley, through the holes of the single carrier bodies, the cord connectors of the first master carrier and the eye-bolt of the end stop. Continue the cord around the dead-end pulley and through the holes of the single carrier bodies of the other half of track, through the cord connectors of the second master carrier and through the second wheel of the live end pulley and to the floor. At this point you should have 2 coils of wire cable on the floor below the live end pulley. Refer to ADC form 745-A for further instructions on cord attachment to the grooved cable drum.
6. Snap one rubber spacer on the inside edge (edge facing the master carrier) of each single carrier, just above the cord hole.
7. With the operating cable attached to the curtain machine drum as per form 745-A, move the master carriers an equal distance from the pulley ends of their track sections. Remove the slack from the cord at the master carrier with the free ends of cord and secure the cord at both masters with the cord connectors provided.

### **IMPORTANT NOTES**

NEVER USE LESS THAN FIVE SUSPENSION POINTS. THE TRACK SHOULD BE SUPPORTED AT ITS ENDS.

ALSO SUPPORT THE LIVE END PULLEY TO THE OVERHEAD STRUCTURE USING THE HOLE PROVIDED ON THE PULLEY.

SUPPORT MEDIA SHOULD BE CHAIN, STEEL MEMBERS, OR WIRE CABLE. **NEVER USE ROPE.**

ONE-WAY OPERATING CURTAINS REQUIRE ONLY ONE MASTER CARRIER AND DO NOT HAVE AN OVERLAP. THE REST OF THE RIGGING PROCEDURE AND HARDWARE IS THE SAME AS WITH A CENTER OPENING, BI-PART CURTAIN.

## **I. CEILING INSTALLATIONS**

**Because ceiling mounted tracks do not provide the opportunity for vertical adjustment, it is very important that the ceiling structure be level. Any deviation can cause the space between the bottom of the curtain and the floor surface to be uneven. Shims or blocking may be required for this purpose.**

Hanging clamps and lap clamps are not needed or provided for ceiling mounted track systems. The top of the track channel should be drilled every 18" for direct attachment to the ceiling structure. The track channel should be properly secured before inserting any accessories.

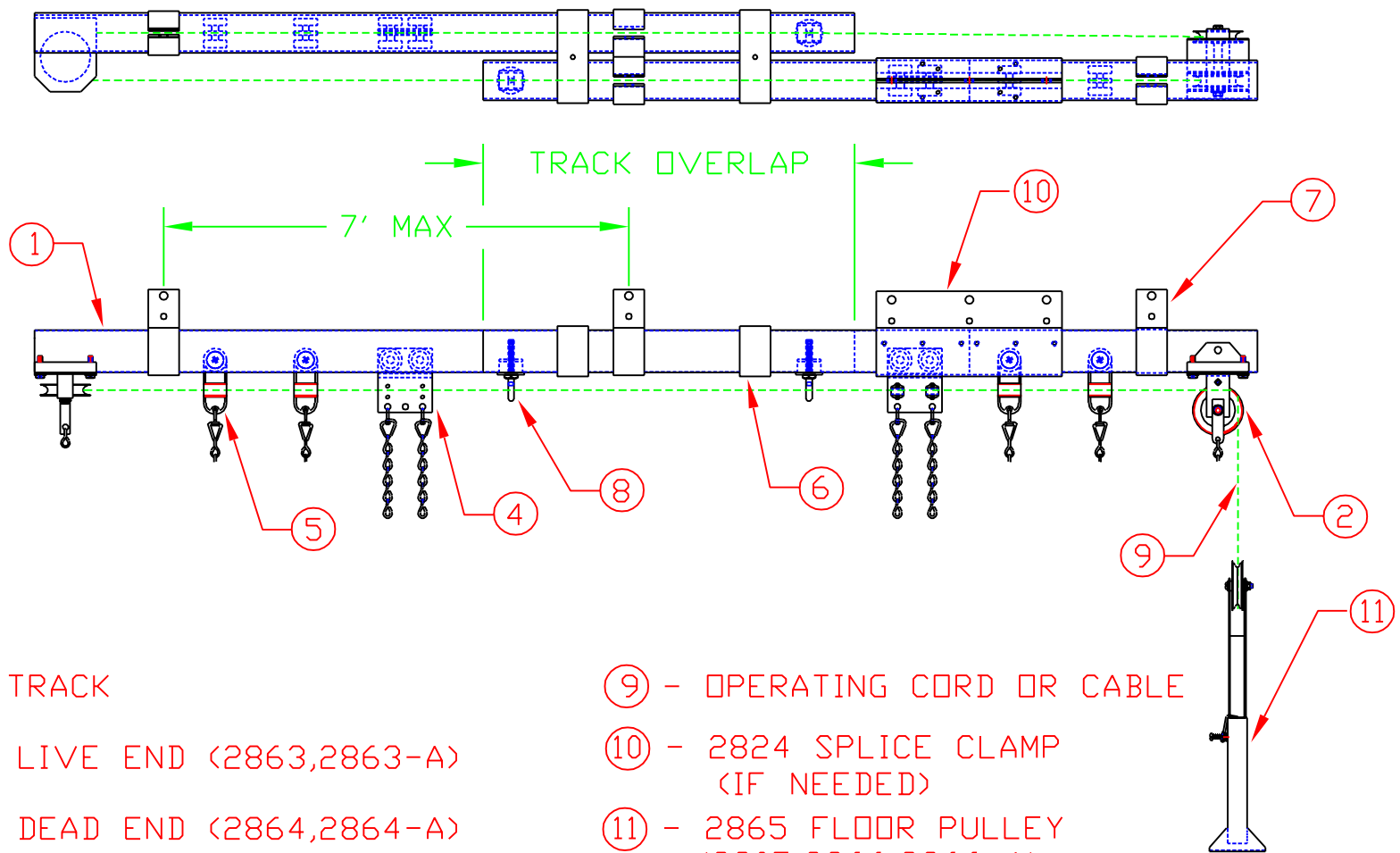
1. Install the live-end and dead-end pulleys to the end of the tracks and secure with the hardware provided.
2. Raise the track to its permanent position and secure in place. Be sure to overlap the tracks at the center in order to provide the necessary center overlap for the curtain. If splice clamps are required install them to the track sections as per splicing instructions and notes below. Mount the floor pulley to the floor directly under and aligned with the track live end pulley.
3. Insert an equal amount of single carriers into each section of track. The carriers can be inserted at the open track ends located at the center overlap. Insert the master carriers into the track sections. Install the eye-bolt end stops to the open track ends at the overlap and secure.
4. Thread one end of the operating cable through one wheel of the live-end pulley, through the holes of the single carrier bodies, the cord connectors of the first master carrier and the eye-bolt of the end stop. Continue the cord around the dead-end pulley and through the holes of the single carrier bodies of the other half of track, through the cord connectors of the second master carrier and through the second wheel of the live end pulley and to the floor. At this point you should have 2 coils of wire cable on the floor below the live end pulley. Refer to ADC form 745-A for further instructions on cord attachment to the grooved cable drum.
5. Snap one rubber spacer on the inside edge (edge facing the master carrier) of each single carrier, just above the cord hole.

6. With the operating cable attached to the curtain machine drum as per form 745-A, move the master carriers an equal distance from the pulley ends of their track sections. Remove the slack from the cord at the master carrier with the free ends of cord and secure the cord at both masters with the cord connectors provided.

### **IMPORTANT SPLICING INFORMATION**

**CEILING MOUNTED TRACK:** Place splicing clamps on track and align holes in splicing clamps with factory drilled and tapped holes of the track channel. Insert twelve 1/4-20 by 5/16" long stove bolts through holes in sides of splice clamps and tighten securely into tapped holes in track channels. Refer to ADC drawing number P-2824-A2 for additional information.

**SUSPENDED TRACK:** Follow the instructions as given on ADC drawing number A2824A. Adjust the set screws so that the walls and center opening of track channels are in alignment for proper operation.

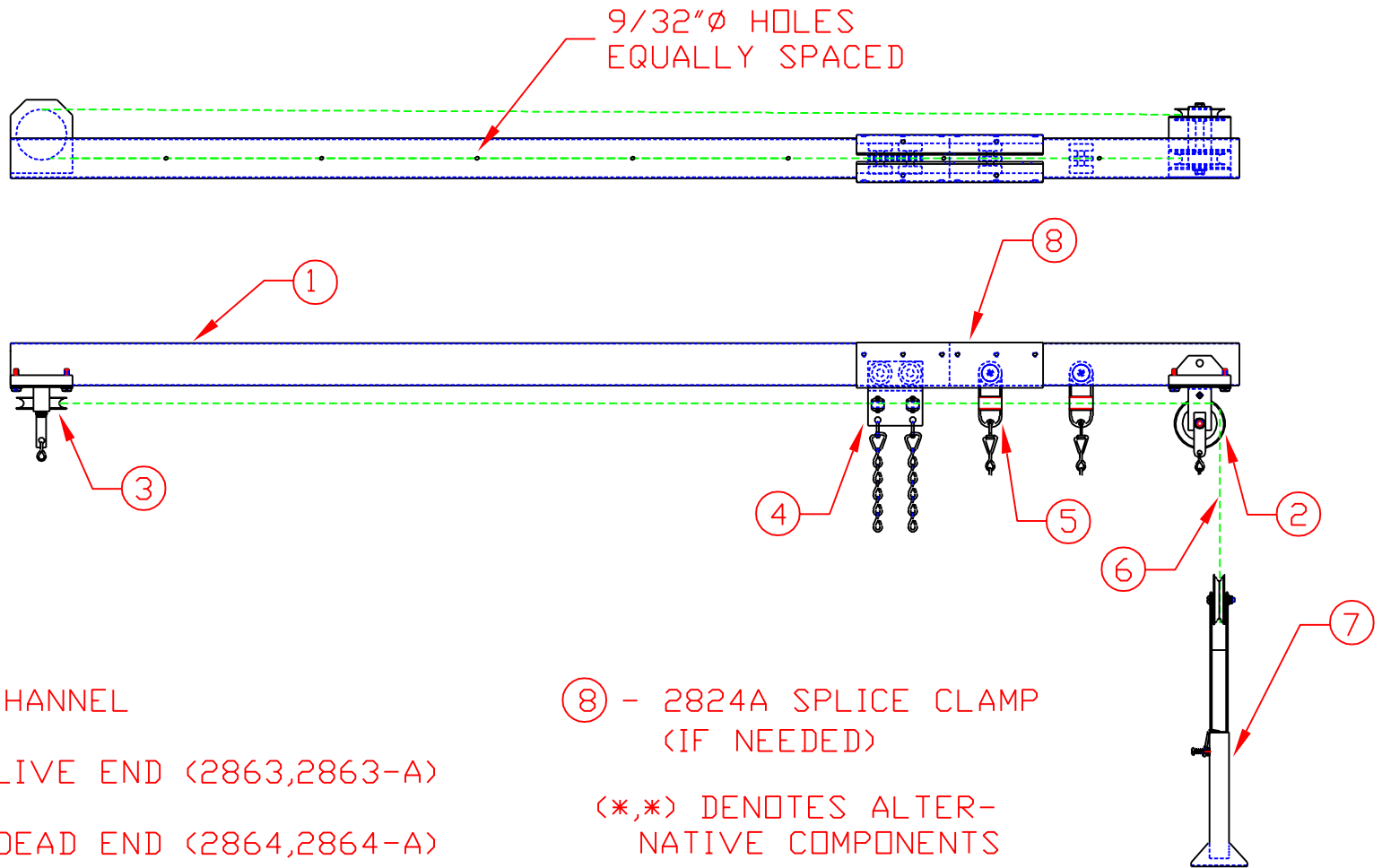


- ① - 2800 TRACK
- ② - 2803 LIVE END (2863,2863-A)
- ③ - 2804 DEAD END (2864,2864-A)
- ④ - 2802 MASTER CARRIER (2850,2852)
- ⑤ - 2801 SINGLE CARRIER (2849,2851)
- ⑥ - 2807 LAP CLAMP
- ⑦ - 2808 HANGING CLAMP
- ⑧ - 2809 END STOP

- ⑨ - OPERATING CORD OR CABLE
- ⑩ - 2824 SPLICE CLAMP (IF NEEDED)
- ⑪ - 2865 FLOOR PULLEY (2805,2866,2866-A)

(\* ,\*) DENOTES ALTERNATIVE COMPONENTS

AUTOMATIC DEVICES COMPANY 2121 S. 12TH ST. ALLENTOWN, PA 18103			
THIS DRAWING HAS BEEN PREPARED AS A SERVICE TO OUR CUSTOMER AND IS INTENDED ONLY TO BE SUGGESTIVE IN NATURE AND IS NOT TO BE USED AS AN ACTUAL INSTALLATION DRAWING. PREVAILING JOB CONDITIONS AND ACCEPTED PRACTICES MUST BE TAKEN INTO ACCOUNT WHEN THE EQUIPMENT IS INSTALLED.			
SIZE	DATE	INSTALLATION	REV
A	01/19/98	INSTRUCTIONS	
DRAWN BY	APPROVED BY	DESCRIPTION 280 BI-PARTING	
GAR		SUSPENDED SYSTEM	
SCALE NTS	SHEET 1 OF 1	DWG NO. II-280BPS-98	



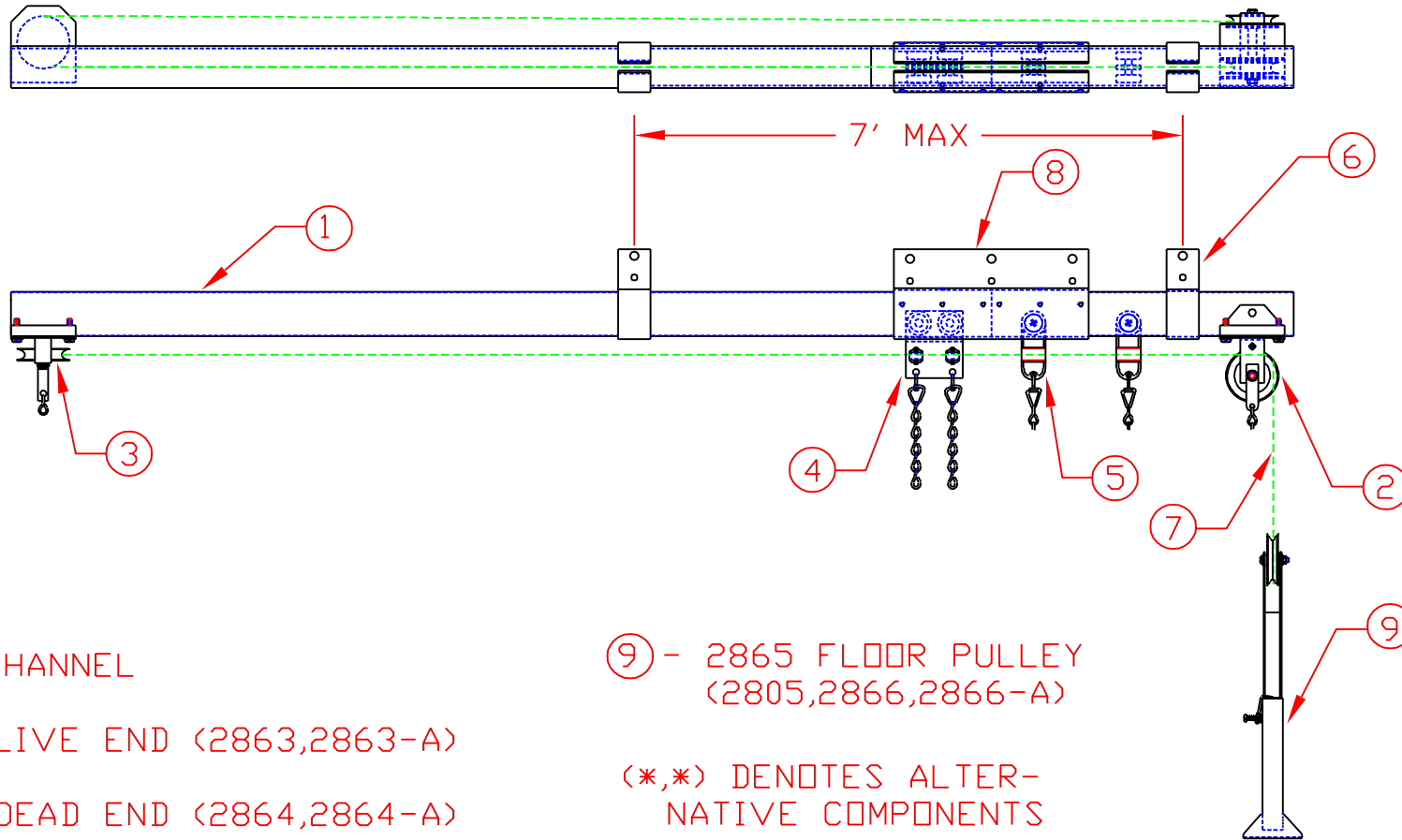
- ① - 2800 CHANNEL
- ② - 2803 LIVE END (2863,2863-A)
- ③ - 2804 DEAD END (2864,2864-A)
- ④ - 2802 MASTER CARRIER (2850,2852)
- ⑤ - 2801 SINGLE CARRIER (2849,2851)
- ⑥ - OPERATING CORD OR CABLE
- ⑦ - 2865 FLOOR PULLEY (2805,2866,2866-A)

⑧ - 2824A SPLICE CLAMP (IF NEEDED)

(\* ,\*) DENOTES ALTERNATIVE COMPONENTS

AUTOMATIC DEVICES COMPANY 2121 S. 12TH ST. ALLENTOWN, PA 18103			
THIS DRAWING HAS BEEN PREPARED AS A SERVICE TO OUR CUSTOMER AND IS INTENDED ONLY TO BE SUGGESTIVE IN NATURE AND IS NOT TO BE USED AS AN ACTUAL INSTALLATION DRAWING. PREVAILING JOB CONDITIONS AND ACCEPTED PRACTICES MUST BE TAKEN INTO ACCOUNT WHEN THE EQUIPMENT IS INSTALLED.			
SIZE	DATE	INSTALLATION	REV
A	05/19/98	INSTRUCTIONS	
DRAWN BY	APPROVED BY	DESCRIPTION 2800 TRACK LEG ASSEMBLY - CEILING MOUNTED	
GAR			
SCALE NTS	SHEET 1 OF 1	DWG NO. II-280CL-98	



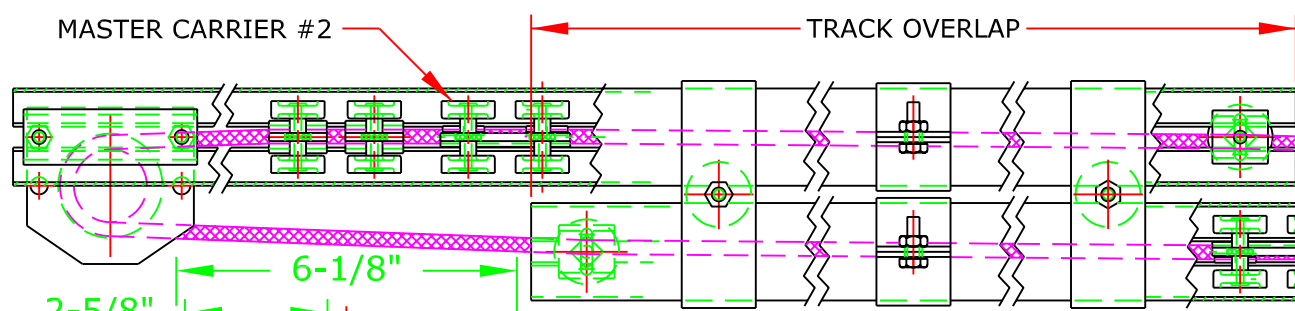
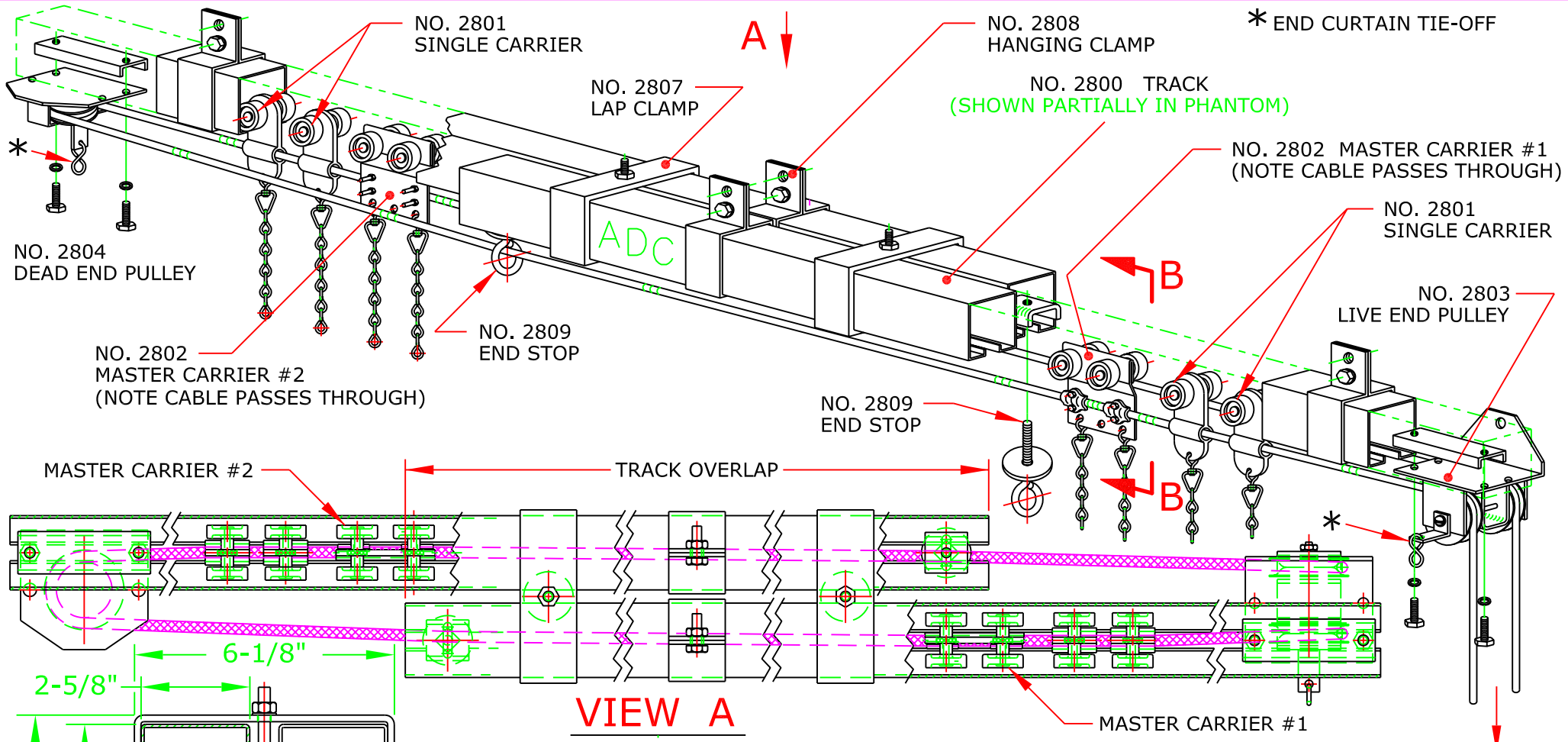


- ① - 2800 CHANNEL
- ② - 2803 LIVE END (2863,2863-A)
- ③ - 2804 DEAD END (2864,2864-A)
- ④ - 2802 MASTER CARRIER (2850,2852)
- ⑤ - 2801 SINGLE CARRIER (2849,2851)
- ⑥ - 2808 HANGING CLAMP
- ⑦ - OPERATING CORD OR CABLE
- ⑧ - 2824 SPLICE CLAMP (IF NEEDED)

⑨ - 2865 FLOOR PULLEY  
(2805,2866,2866-A)

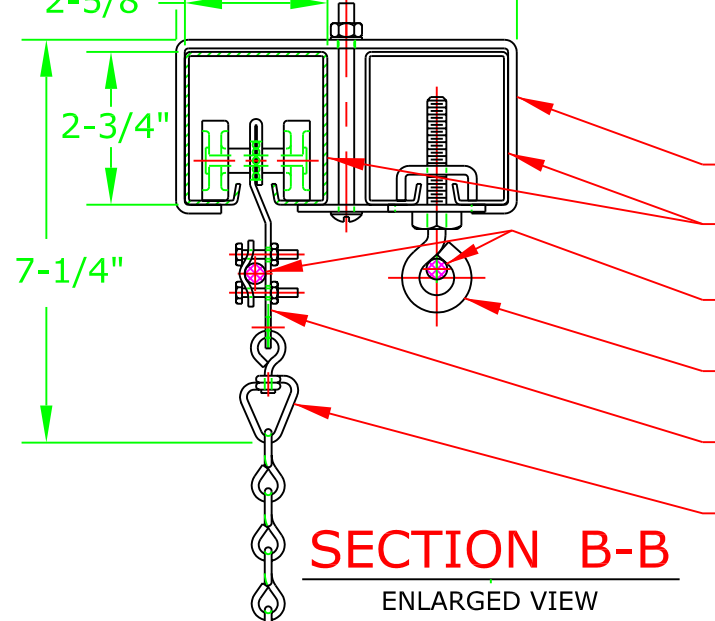
(\* ,\*) DENOTES ALTER-  
NATIVE COMPONENTS

AUTOMATIC DEVICES COMPANY 2121 S. 12TH ST. ALLENTOWN, PA 18103			
THIS DRAWING HAS BEEN PREPARED AS A SERVICE TO OUR CUSTOMER AND IS INTENDED ONLY TO BE SUGGESTIVE IN NATURE AND IS NOT TO BE USED AS AN ACTUAL INSTALLATION DRAWING. PREVAILING JOB CONDITIONS AND ACCEPTED PRACTICES MUST BE TAKEN INTO ACCOUNT WHEN THE EQUIPMENT IS INSTALLED.			
SIZE	DATE	INSTALLATION	REV
A	05/19/98	INSTRUCTIONS	
DRAWN BY	APPROVED BY	DESCRIPTION 2800 TRACK	
GAR		ASSEMBLY	
SCALE NTS	SHEET 1 OF 1	DWG NO. II-280-98	



**VIEW A**

ENLARGED TOP VIEW  
SCALE: 3/16=1



**SECTION B-B**

ENLARGED VIEW

CABLE GOES TO FLOOR MOUNTED DRUM DRIVE CURTAIN MACHINE

**ado** AUTOMATIC DEVICES COMPANY  
2121 S. 12TH ST. ALLENTOWN, PA 18103

THIS DRAWING HAS BEEN PREPARED AS A SERVICE TO OUR CUSTOMER AND IS INTENDED ONLY TO BE SUGGESTIVE IN NATURE AND IS NOT TO BE USED AS AN ACTUAL INSTALLATION DRAWING. PREVAILING JOB CONDITIONS AND ACCEPTED PRACTICES MUST BE TAKEN INTO ACCOUNT WHEN THE EQUIPMENT IS INSTALLED.

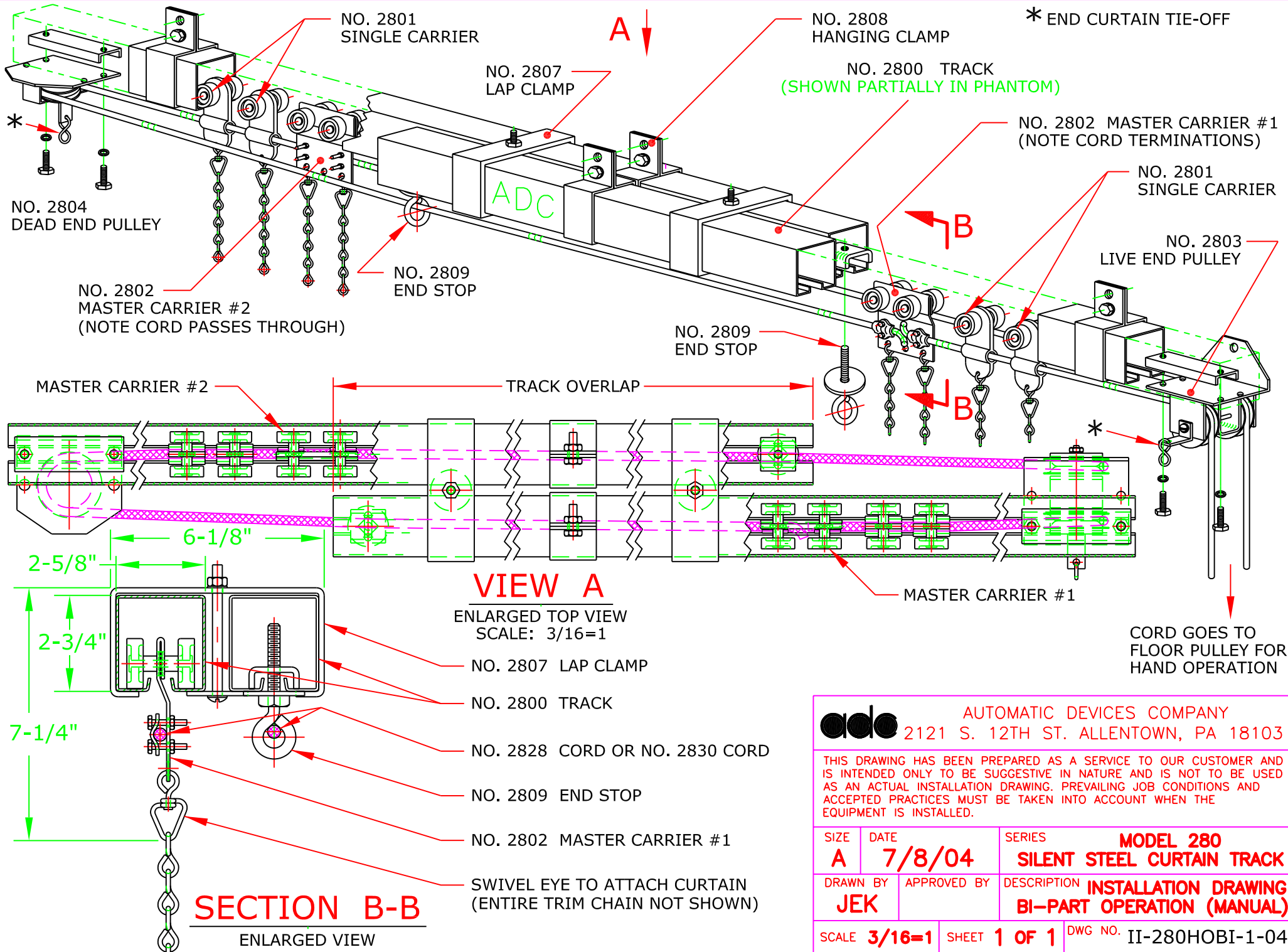
SIZE	DATE	SERIES	<b>MODEL 280</b>
<b>A</b>	<b>7/13/04</b>	<b>SILENT STEEL CURTAIN TRACK</b>	
DRAWN BY	APPROVED BY	DESCRIPTION	<b>INSTALLATION DRAWING</b>
<b>JEK</b>		<b>BI-PART OPERATION (MACHINE)</b>	

REV.

DATE:

DO NOT USE FOR MACHINE OPERATED TRACKS

FORM NO.: 280BPHOS



\* END CURTAIN TIE-OFF

**VIEW A**

ENLARGED TOP VIEW  
SCALE: 3/16=1

**SECTION B-B**

ENLARGED VIEW



AUTOMATIC DEVICES COMPANY  
2121 S. 12TH ST. ALLENTOWN, PA 18103

THIS DRAWING HAS BEEN PREPARED AS A SERVICE TO OUR CUSTOMER AND IS INTENDED ONLY TO BE SUGGESTIVE IN NATURE AND IS NOT TO BE USED AS AN ACTUAL INSTALLATION DRAWING. PREVAILING JOB CONDITIONS AND ACCEPTED PRACTICES MUST BE TAKEN INTO ACCOUNT WHEN THE EQUIPMENT IS INSTALLED.

SIZE <b>A</b>	DATE <b>7/8/04</b>	SERIES <b>MODEL 280</b>
DRAWN BY <b>JEK</b>		APPROVED BY
DESCRIPTION <b>INSTALLATION DRAWING</b>		<b>BI-PART OPERATION (MANUAL)</b>
SCALE <b>3/16=1</b>	SHEET <b>1 OF 1</b>	DWG NO. <b>II-280HOB1-1-04</b>

**HARDWARE REQUIRED:**

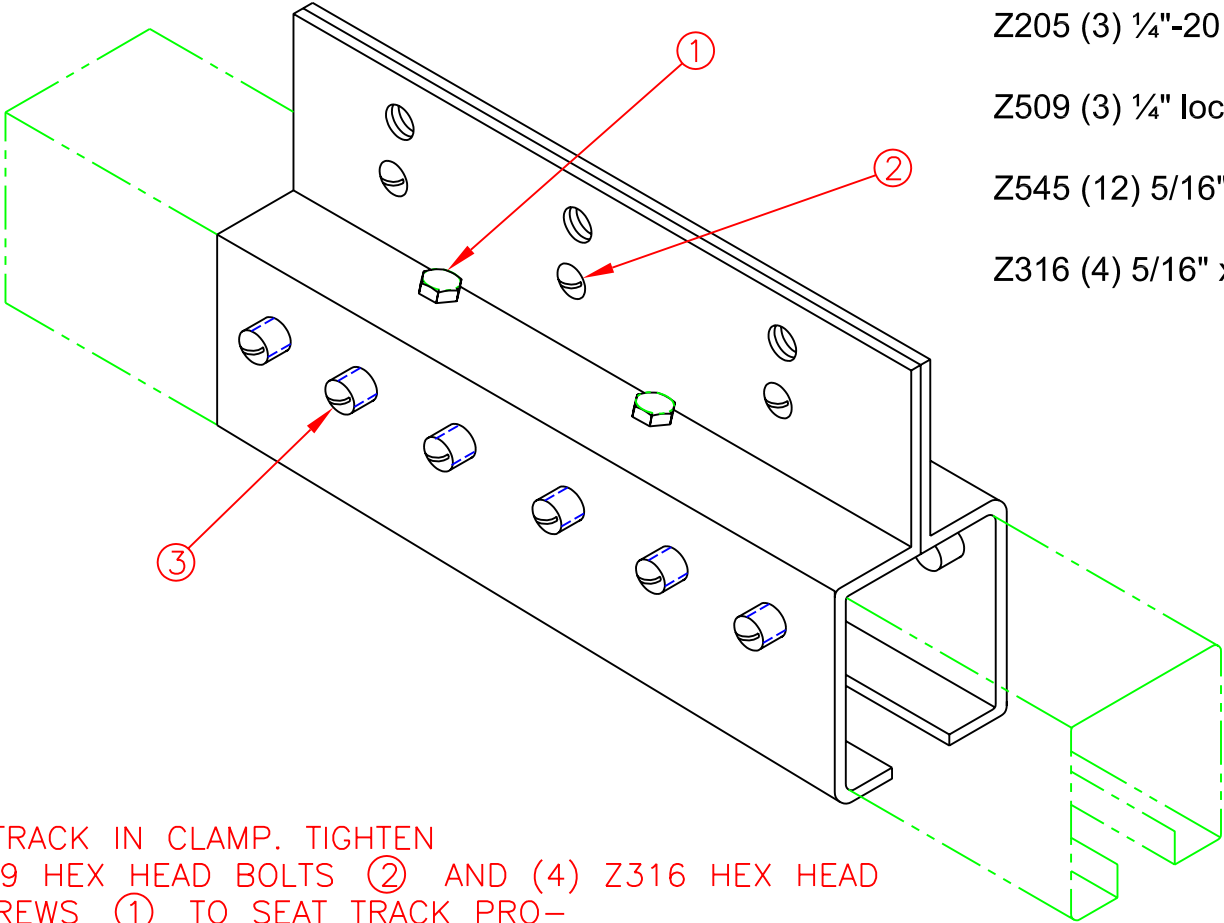
Z029 (3) 1/4"-20 x 3/4" hex head bolts

Z205 (3) 1/4"-20 nuts

Z509 (3) 1/4" lockwashers

Z545 (12) 5/16" x 5/16" slotted set screws

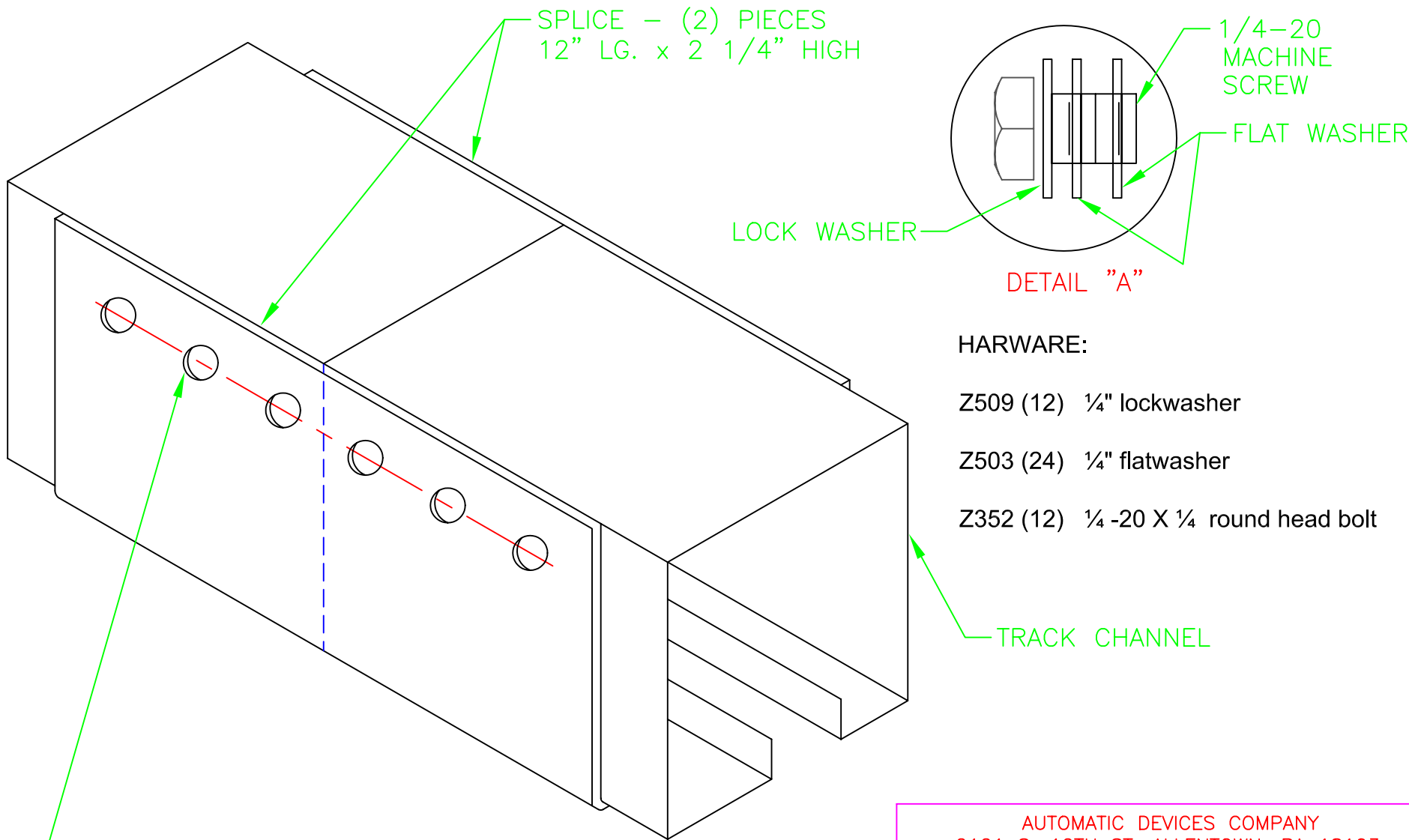
Z316 (4) 5/16" x 1/2" hex head bolts



NOTE: PLACE TRACK IN CLAMP. TIGHTEN (3) Z029 HEX HEAD BOLTS (2) AND (4) Z316 HEX HEAD CAP SCREWS (1) TO SEAT TRACK PROPERLY IN SPLICE, THEN TIGHTEN (12) SET SCREWS (3) Z545 TO ALIGN TRACK WALLS.

DO NOT OVERTIGHTEN SCREWS

AUTOMATIC DEVICES COMPANY 2121 S. 12TH ST. ALLENTOWN, PA 18103			
THIS DRAWING HAS BEEN PREPARED AS A SERVICE TO OUR CUSTOMER AND IS INTENDED ONLY TO BE SUGGESTIVE IN NATURE AND IS NOT TO BE USED AS AN ACTUAL INSTALLATION DRAWING. PREVAILING JOB CONDITIONS AND ACCEPTED PRACTICES MUST BE TAKEN INTO ACCOUNT WHEN THE EQUIPMENT IS INSTALLED.			
SIZE	DATE	FORM	REV
A	05/18/93	417	
DRAWN BY	APPROVED BY	DESCRIPTION	
DCH		1724 & 2824 SPLICE CLAMP	
SCALE	SHEET	DWG NO.	
NONE	1 OF 1	A2824-1724-93	



SPLICE - (2) PIECES  
12" LG. x 2 1/4" HIGH

1/4-20  
MACHINE  
SCREW

FLAT WASHER

LOCK WASHER

DETAIL "A"

HARWARE:

Z509 (12) 1/4" lockwasher

Z503 (24) 1/4" flatwasher

Z352 (12) 1/4 -20 X 1/4 round head bolt

TRACK CHANNEL

NOTE: DRILL (6) HOLES IN EACH SIDE OF THE TRACK WITH #7 DRILL USING SPLICE AS A HOLE LOCATION TEMPLATE. THEN TAP HOLES WITH 1/4-20 TAP. TO BE FASTENED WITH 1/4-20 MACHINE SCREWS 5/16" LONG, 1-LOCK WASHER, AND 2 FLAT WASHERS AS SHOWN IN DETAIL "A". MAKE SURE TRACKS ARE PROPERLY ALIGNED.

AUTOMATIC DEVICES COMPANY  
2121 S. 12TH ST. ALLENTOWN, PA 18103

THIS DRAWING HAS BEEN PREPARED AS A SERVICE TO OUR CUSTOMER AND IS INTENDED ONLY TO BE SUGGESTIVE IN NATURE AND IS NOT TO BE USED AS AN ACTUAL INSTALLATION DRAWING. PREVAILING JOB CONDITIONS AND ACCEPTED PRACTICES MUST BE TAKEN INTO ACCOUNT WHEN THE EQUIPMENT IS INSTALLED.

SIZE A	DATE 12/11/96	REV
DRAWN BY GAR	APPROVED BY	DESCRIPTION SPLICING CLAMP (2) PIECE 11 GAUGE STL.
SCALE NONE	SHEET 1 OF 1	DWG NO. ISO-2624-96